



polytec

DECORATIVE
18MM DOORS & PANELS

polytec.com.au



Doors, panels and shelving in **Decorative 18mm** Blonde Oak Woodmatt.
Benchtops in 15mm **Xenolith** and splashback in 5mm **Xenolith** White Cement Smooth.

Decorative 18mm doors & panels

Style the surfaces within your project using **polytec**'s extensive Decorative 18mm range. Blend unique textures, tones, and finishes to achieve a contemporary look. Mix warm colours with cool accents, or matt surfaces with a timbergrain to create visual interest. Choosing from the Decorative 18mm range enables you to achieve a truly leading-edge design. Tall cupboards featuring timbergrains or silky finishes that stretch from floor to ceiling provide the perfect backdrop for your choice of ultra glossy or super matt doors and drawers.

The Decorative 18mm range is a collection of **polytec**'s leading and most innovative finishes—Woodmatt, Ravine, Legato, Ultramatt, Ultraglaze, Createc, and Venette. Designed to be complementary, these surface solutions allow you to infuse your spaces with the latest colours and finishes.

polytec's Ravine showcases a raw embossed natural touch timber surface lightly coloured with warm and inviting shades.

polytec's Legato features a super matt, non-reflective finish. This subtle, understated look is imbued with lighter, timber tones and delivers a fresh refined presence.

polytec's Ultramatt and Ultraglaze doors & panels are an acrylic, premium surface appropriate for residential and commercial joinery. The fingerprint and scuff resistant properties of Ultramatt make it a suitable option for high-traffic zones, while Ultraglaze remains an innovative high gloss finish in the decorative surfaces industry.

polytec's Createc allows your kitchen to shine. Its ultra high gloss surface delivers sharp lines and a polished, sophisticated finish.

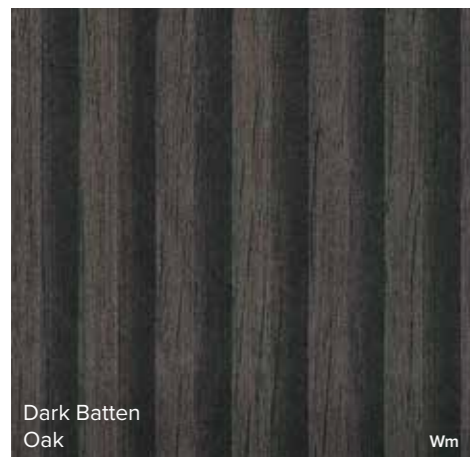
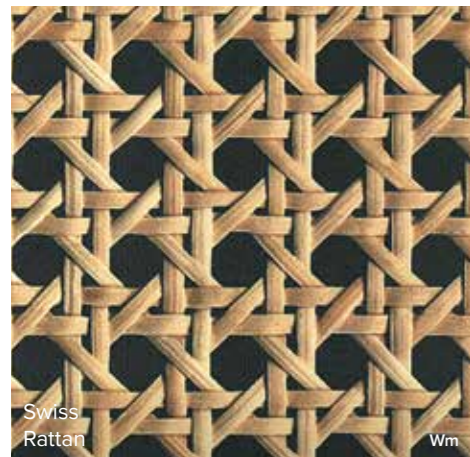
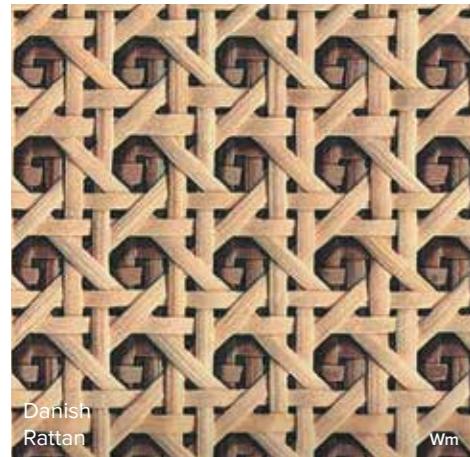
polytec's Venette is a leading edge innovation in decorative doors and panels, delivering exceptional fingerprint resistant technology in the purest matt form. The silky smooth finish of Venette creates an inviting and pleasant touch experience, whilst the pure matt surface assures low light reflection.

Blend your choices to capture the latest design trends and style your ideal space.



Doors and panels in Decorative 18mm Manor Oak Woodmatt.

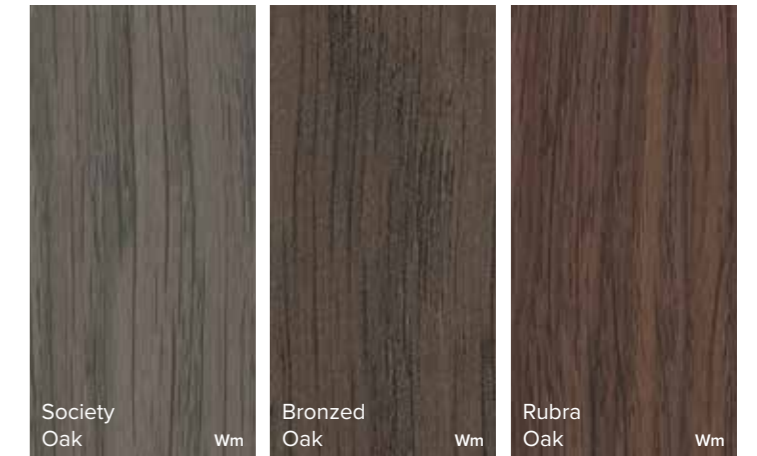
Specialty Woodmatt



Doors, panels, and shelving in **Decorative** 18mm Rubra Oak Woodmatt.
 Horizon drawers with Clear Glass inserts in **Decorative** 18mm Rubra Oak Woodmatt.
 Benchtops in 15mm **Xenolith** White Cement Smooth.

Available finishes Wm = Woodmatt

Woodmatt



Available finishes Wm = Woodmatt



Doors, panels and shelving in **Decorative** 18mm Soft Walnut Ravine.

Ravine / Linear Embossed Wood Grain

Ravine Solids



Available finishes **R** = Ravine

polytec swatches and samples represent a small area of the overall colour structure. To view the large colour sample, visit polytec.com.au. Dark coloured surfaces will show fingerprints and require more care and maintenance than lighter coloured surfaces. **polytec** recommends testing a product sample prior to colour selection.

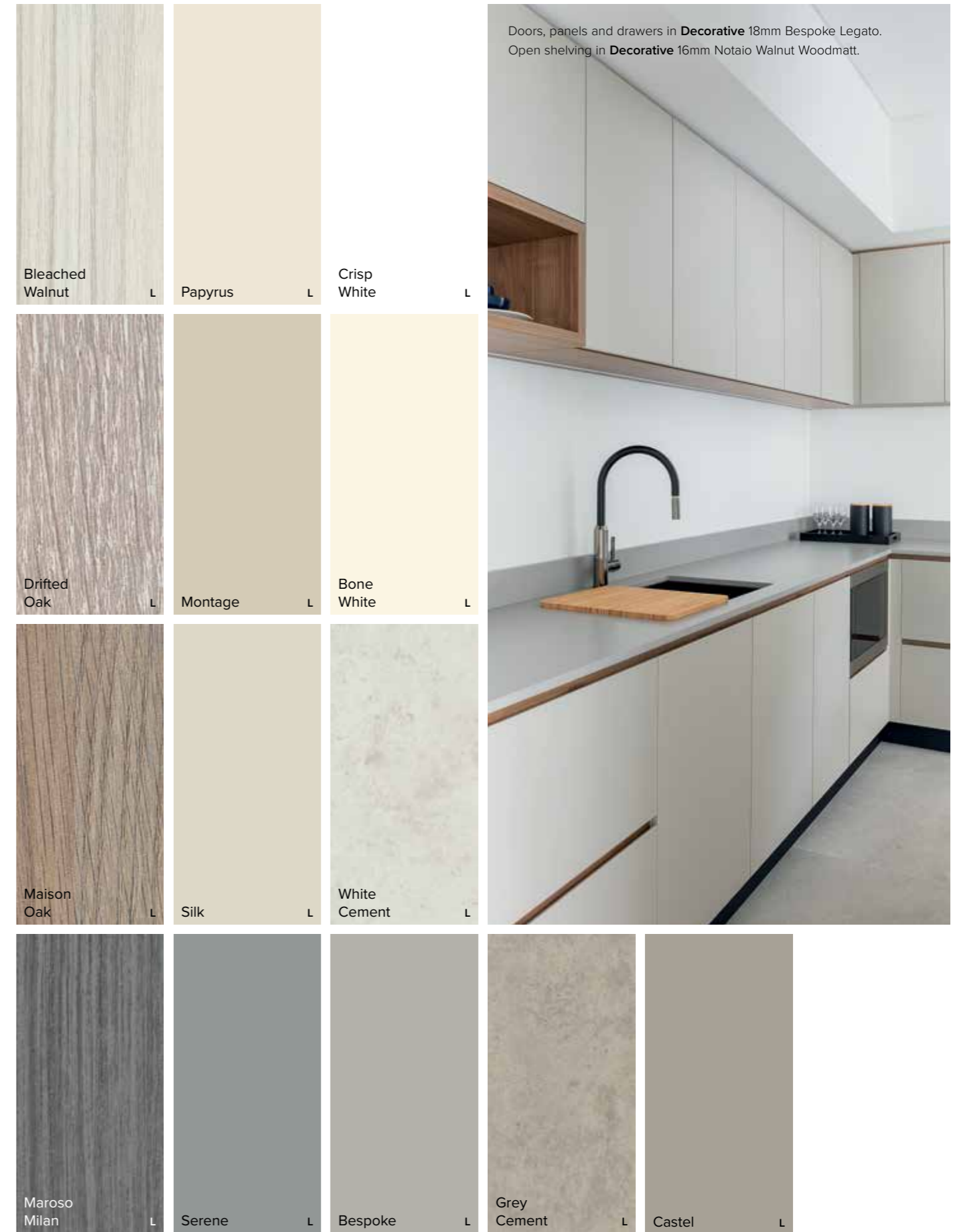


Doors, panels and drawers in **Decorative** 18mm Soft Walnut Ravine.



Doors, panels and drawers in **Decorative** 18mm Bespoke Legato and **Decorative** 16mm Notaio Walnut Woodmatt.
 Pantry doors in **Decorative** 18mm Black Venette.

Legato / Super Matt



Doors, panels and drawers in **Decorative** 18mm Bespoke Legato.
 Open shelving in **Decorative** 16mm Notaio Walnut Woodmatt.



Available finishes L = Legato

polytec swatches and samples represent a small area of the overall colour structure. To view the large colour sample, visit polytec.com.au. Dark coloured surfaces will show fingerprints and require more care and maintenance than lighter coloured surfaces. **polytec** recommends testing a product sample prior to colour selection.



Doors, panels and drawers in **Decorative** 18mm Black Ultramatt.
Overhead cupboard and pantry doors in **Decorative** 16mm Angora Oak Woodmatt.

Ultramatt / Premium Matt

		
White Um	Jasmine Um	Sterling Um
		
Pewter Metallic Um	Mink Um	Lava Um
		
Mineral Metallic Um	Obsidian Metallic Um	Black Um
		
Evergreen Um	Navy Um	

polytec swatches and samples represent a small area of the overall colour structure. To view the large colour sample, visit polytec.com.au.
Dark coloured surfaces will show fingerprints and require more care and maintenance than lighter coloured surfaces. **polytec** recommends testing a product sample prior to colour selection.

Available finishes Um = Ultramatt



Doors and panels in **Decorative 18mm Superior White Ultraglaze.**

Ultraglaze / Premium Gloss

Arctic Ice Ug	Superior White Ug	Cream Ug
Pearl Metallic Ug	Royal Oyster Ug	Champagne Metallic Ug
Cloudy Grey Ug	Anthracite Metallic Ug	Phantom Black Ug

Available finishes **Ug** = Ultraglaze

polytec swatches and samples represent a small area of the overall colour structure. To view the large colour sample, visit polytec.com.au.

Dark coloured surfaces will show fingerprints and require more care and maintenance than lighter coloured surfaces. **polytec** recommends testing a product sample prior to colour selection.



Doors, drawers and panels in **Decorative** 18mm New Ultra White Createc.
Overhead doors and shelving in **Decorative** 18mm Sepia Oak Ravine.

Createc / Ultra High Gloss



Available finishes C = Createc

polytec swatches and samples represent a small area of the overall colour structure. To view the large colour sample, visit polytec.com.au.

Dark coloured surfaces will show fingerprints and require more care and maintenance than lighter coloured surfaces. **polytec** recommends testing a product sample prior to colour selection.



Doors and panels in **Decorative 18mm Botanic Venette**.

Venette / Pure Matt



Available finishes **v** = Venette

polytec swatches and samples represent a small area of the overall colour structure. To view the large colour sample, visit polytec.com.au. Dark coloured surfaces will show fingerprints and require more care and maintenance than lighter coloured surfaces. **polytec** recommends testing a product sample prior to colour selection.



Doors and panels in **Decorative** 18mm Blonde Oak Woodmatt.
 Benchtops in 15mm **Xenolith** and splashback in 5mm **Xenolith** White Cement Smooth.



Responsible Wood
 RW17-31-145



PEFC
 PEFC/21-31-145



Environment & Sustainability

polytec is 100% Australian family-owned brand and for over 30 years, we have taken pride in being an Australian manufacturer, with sustainability ingrained in the core of our operations, products, and work practices, shifting towards continual dedication to improving and enhancing our environmental performance. This involves a steadfast reduction of our carbon footprint, minimising waste, optimising energy efficiency, and integrating ethically sourced materials into our product ranges.

Our MDF and Particleboard are manufactured from managed and renewable plantation pine that has been Green Tag, Responsible Wood and PEFC certified. All **polytec** board products are manufactured from E0 or E1 substrates, with particleboard now made from a percentage of recycled wood material.

The reDirect Recycling Wood Recovery Initiative services **polytec** customers by collecting raw and melamine coated particleboard offcuts for reuse. These materials are diverted from landfill and repurposed into new particleboard within our closed loop manufacturing processes, reducing waste and preserving valuable plantation resources.

polytec are striving to reduce carbon emissions by installing solar panels throughout all sites nationwide. Since 2018, over 46,000 solar panels across the network of facilities have been installed. When installed, the Oberon facility was Australia's largest rooftop solar system with over 27,000 solar panels over eight hectares.

polytec is on a journey – one that places sustainability at the centre of how we design, manufacture, and support our customers. We believe that sustainable practices are the foundation of strong, resilient communities – and we're committed to contributing to a healthier, more sustainable future for all.

Care & Maintenance

polytec do not recommend the use of Decorative 18mm products in a sliding or non-fixed application (hinged) unless the use of a mechanical stabilising system is fitted. Decorative 18mm doors and panels are supplied with a protective film to protect the surface during installation. This film must be removed within three months of installation.

Your Decorative 18mm doors and panels are made from a Moisture Resistant Medium Density Fibreboard (MR MDF), but as with many wood based panels, they are not waterproof. Care should be taken to wipe up spills immediately, ensuring the doors are not exposed to high or continuous levels of moisture, steam and humidity.

Decorative 18mm doors and panels should be cleaned by wiping down with a damp soft cloth and warm soapy water. For more stubborn stains use a mild household cleaning spray. Always ensure you refer to the recommendations provided by the manufacturer of the cleaning product before use.

By following these simple steps you should retain a beautiful kitchen surface for many years.

Visit polytec.com.au for specific care and cleaning information.

Important

Darker colours will show superficial wear and tear more readily than lighter coloured surfaces and require more care and maintenance.

Createc and Venette are a painted product and as with many painted materials a slight odour may occur when fresh, or if not permitted to air. The products comply with Green Building Council of Australia. Green Star Design & As Built V1.3 – 13.1.2B & 13.2. Green Star Interiors V1.3 – 12.1.2B for emission of VOCs.

The colours and details shown in this brochure are to the highest standards in printing. However, they should only be used as an indication of actual product colour. To order your free colour sample visit polytec.com.au.

polytec swatches and samples represent a small area of the overall colour structure, to view a large colour sample or a full sheet design, visit polytec.com.au.

The use of our current samples gives the colour and finish that a customer would expect to receive. Samples are provided for colour and finish selection and **polytec** recommend testing a sample for fingerprint resistance and ease of cleaning. **polytec** does not guarantee exact colour matches across product ranges due to colour variation in each product group.

Complementary Ranges

BENCHTOPS Range	DECORATIVE 16mm Doors & Panels
XENOLITH 18mm Premium Solid Core Tops	THERMOLAMINATED Doors & Panels
STECAWOOD Prefinished Decorative Battens	ALFRESCO & ALUMINIUM Framed Doors
ARCHITECTURAL DOORS 35mm	WARDROBE Range

COVER IMAGE:

Doors and panels in **Decorative** 18mm Botanic Venette.



polytec

Take advantage of our express sample service and visit our website to request your free sample.

polytec.com.au | 1300 300 547



2026.02

Proudly Supporting

McGrath Foundation